

RICIGNOLO

1928

N.796.



AUTUMN-WINTER 2025/26

| | |
|-------------|----------------------------------|
| ARTICLE | FAMBO |
| COUNT | 3000 NM |
| COMPOSITION | 22% CASHMERE 8% SILK 70% WOOL |

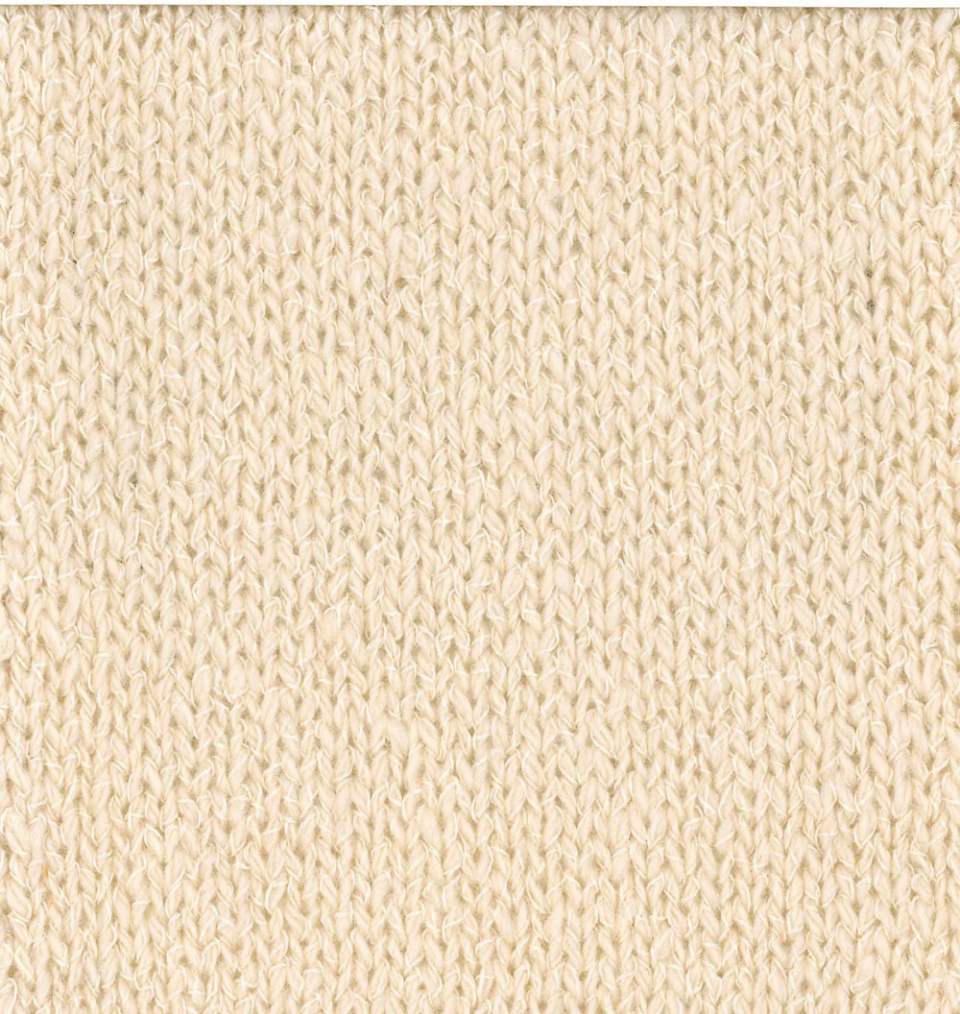


Available colours for sampling unless sold*

This colour card has been produced on basis of Lord 1/8000 Nm
Reproduction of the colour shades may vary for other qualities

GTI
Filati

FAMBO 3000 NM 22% CASHMERE 8% SILK 70% WOOL



Ricignolo



GTI
Filati

GRUPPO TESSILE INDUSTRIALE SPA

Strada Trossi, 57 - 13871 Verrone, Biella - BI - Tel +39 015 2556101 Fax +39 015 2558348

gti@gti-suedwollegroup.com www.gtispa.it